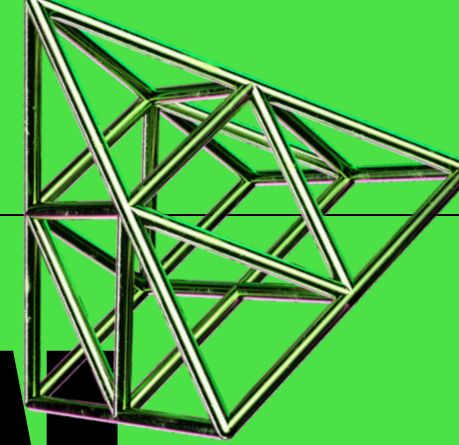




AI AND LAW

The impact of AI on society

AI FUNCTION



It can do things instead of people



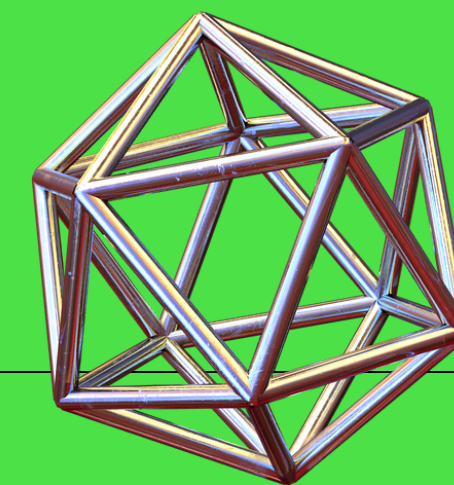
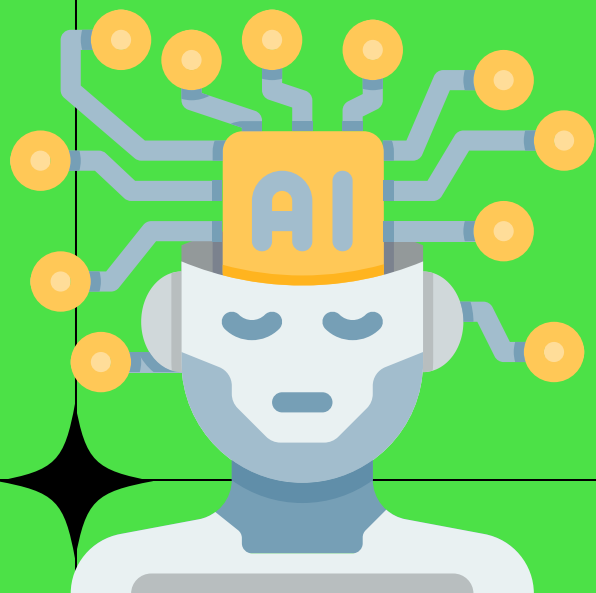
It can solve things related to human intelligence



It can think like a human



It can replace most positions

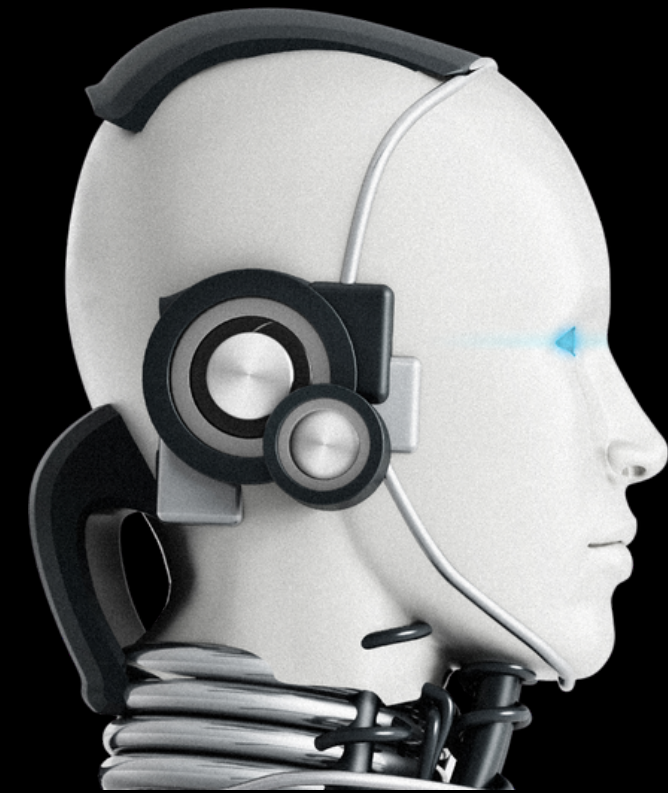
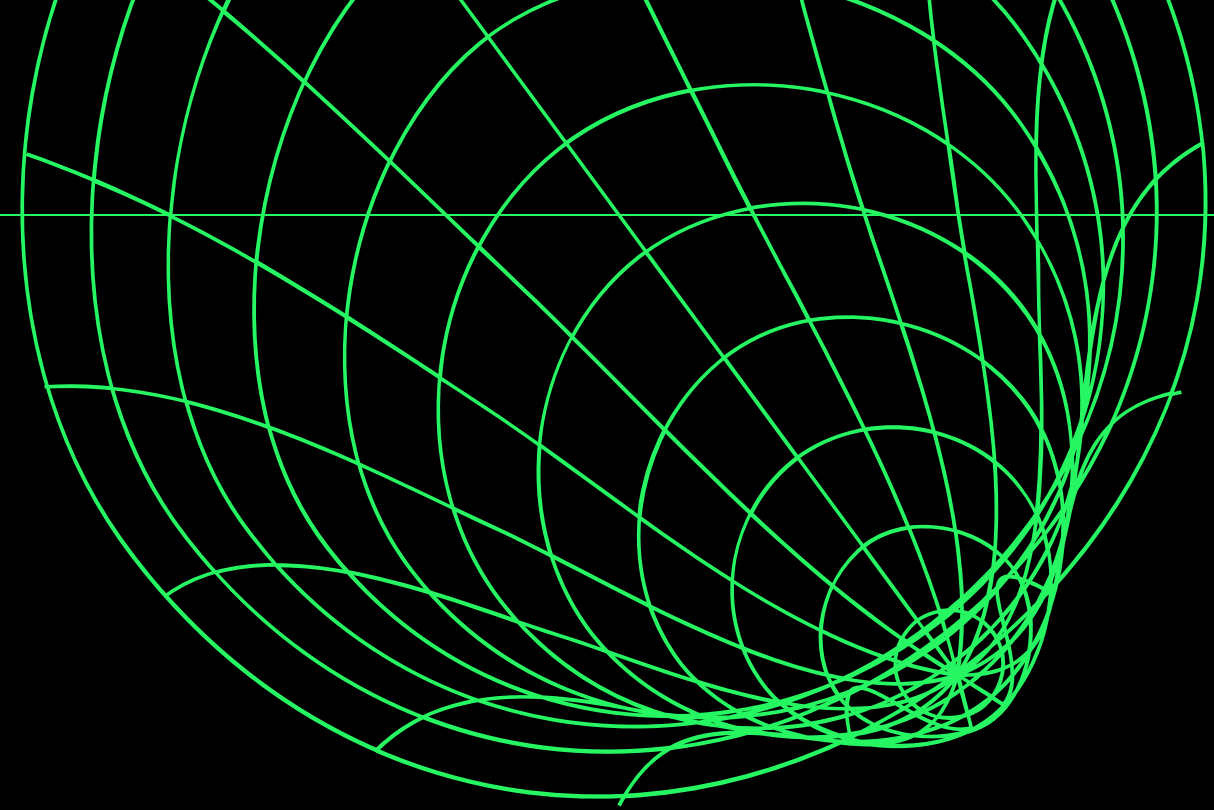


CHAT GPT

⊕ It has a strong database to solve human problems

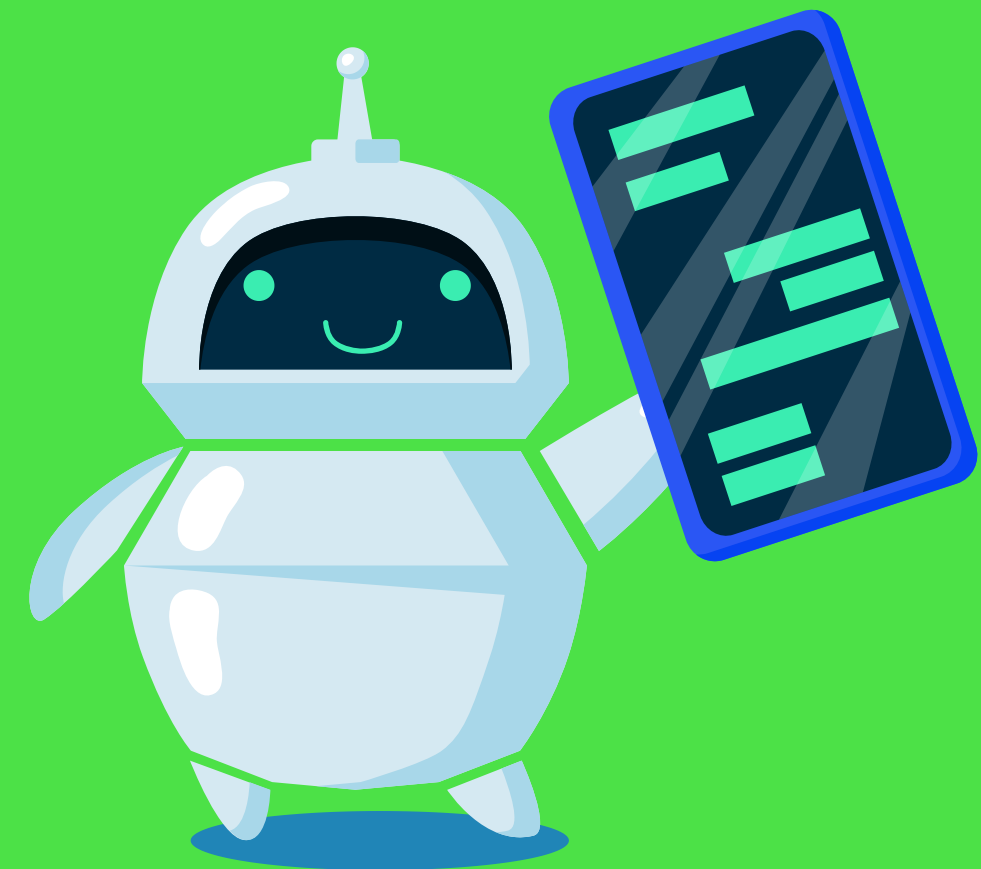
⊕ it has a thinking pattern

⊕ It has a Memory function



influence

- ⊕ **User Responsibility**
- ⊕ **Producer Responsibility**
- ⊕ **Ai Legal Personality Problem**



MEASURE

As technology continues to advance rapidly, how can we prevent the negative impacts of AI and ensure that it coexists peacefully with rule-of-law countries?



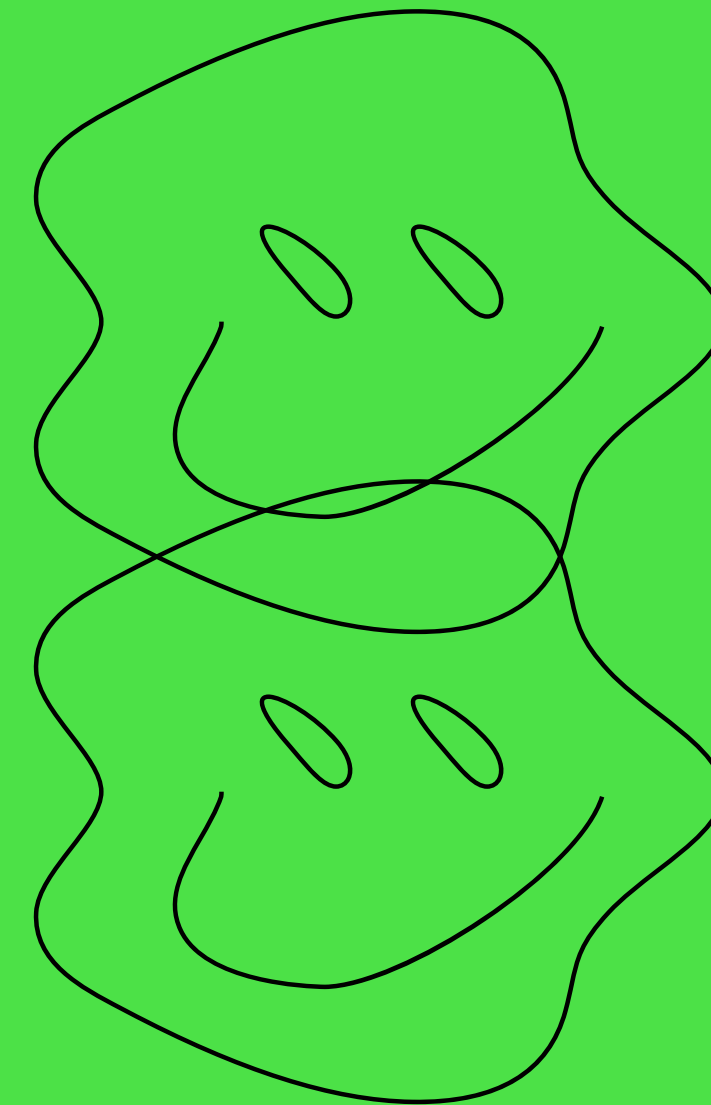
WE CAN CONSIDER THE FOLLOWING

Legal regulations

Ethical regulations

Establishment of regulatory agencies

THANKS



AI AND LAW